

JOOMPAC INTELLIGENT TECHNOLOGY CO., LTD

Tel:0086-531-5957-7587

Website:www.joompac.com

E-mail:sebastian@joompac.com / export@joompac.com

YouTube:www.youtube.com/channel/UCy0npwTr2blx2qyfrFKy0-w

Address:688 Chunhui Road,high tech Zone,Jinan City,Shandong Province

INDUSTRIALPACKAGING MACHINES

WRAPPING & PACKAGING SOLUTIONS

STRETCH WRAPPING & PALLET WRAPPING MACHINES

About us

Joompac®

Shandong Joompac is a Chinese manufacturer with more than 20 years' experience in R&D, design and manufacturing of automated & semi-automated stretch wrapping machines, pallet wrapping machines and industrial packaging machinery, providing individual wrapping and packaging solutions. The company is located in Jinan City, Shandong Province, China.

Shandong Joompac also provides related technical services for cooperation partners and customers at any stage of the cooperation, working together, hand in hand.

The company's main products include vertical stretch wrapping machines, horizontal stretch wrapping machines, conveyor wrapping machines that can be integrated in whole production lines and others, with customers all around the globe. Main benefits of using Shandong Joompac wrapping machines are reduced material waste, optimal usage of film material, more secure pallet loads and significantly improved working productivity as well as fast handling of wrapping processes.

The machines are widely applied in the following industries: Food, chemical fiber, chemical, construction & building materials and many others.

Shandong Joompac is also offering individual packaging and wrapping solutions according to specific customer needs.

For more information and to request a quote, please contact us.

Our partner



STRETCH WRAPPERS

- T100 Full-Automatic Stretch Wrapper
- T101 Semi-Automatic Stretch Wrapper
- T102 Stretch Wrapper with Top Platen
- T103 Stretch Wrapper with Weight Scale
- T104 Forklift Stretch Wrapper
- T105FM Automatic Stretch Wrapper with Top sheet
- N600 Non-Pallet Winding Stretching Packaging Machine
- Y500 MINI Reel Stretch Wrapper

ONLINE STRETCH WRAPPERS

- T200 Online Stretch Wrapper
- T200FM Online Stretch Wrapper with Top Sheet
- MD01 Truss Manipulator Stacker

ROTARY STRETCH WRAPPERS

- T300 Full-Automatic "Swing Arm Type"
- T300-Y Rotary Stretch Wrapper
- T300FM Rotary Arm Stretch Wrapper with Top Sheet
- T300E Rotary Arm Stretch Wrapper

TOP SHEET MACHINES

- F1800A Through type "Top Sheet Machine"
- F1800B Frame type "Top Sheet Machine"

REEL TYPE STRETCH WRAPPERS

- W1600F Radial Stretch Wrapper
- Y2000 Reel Stretch Wrapper

HIGH-SPEED RING TYPE STRETCH WRAPPERS

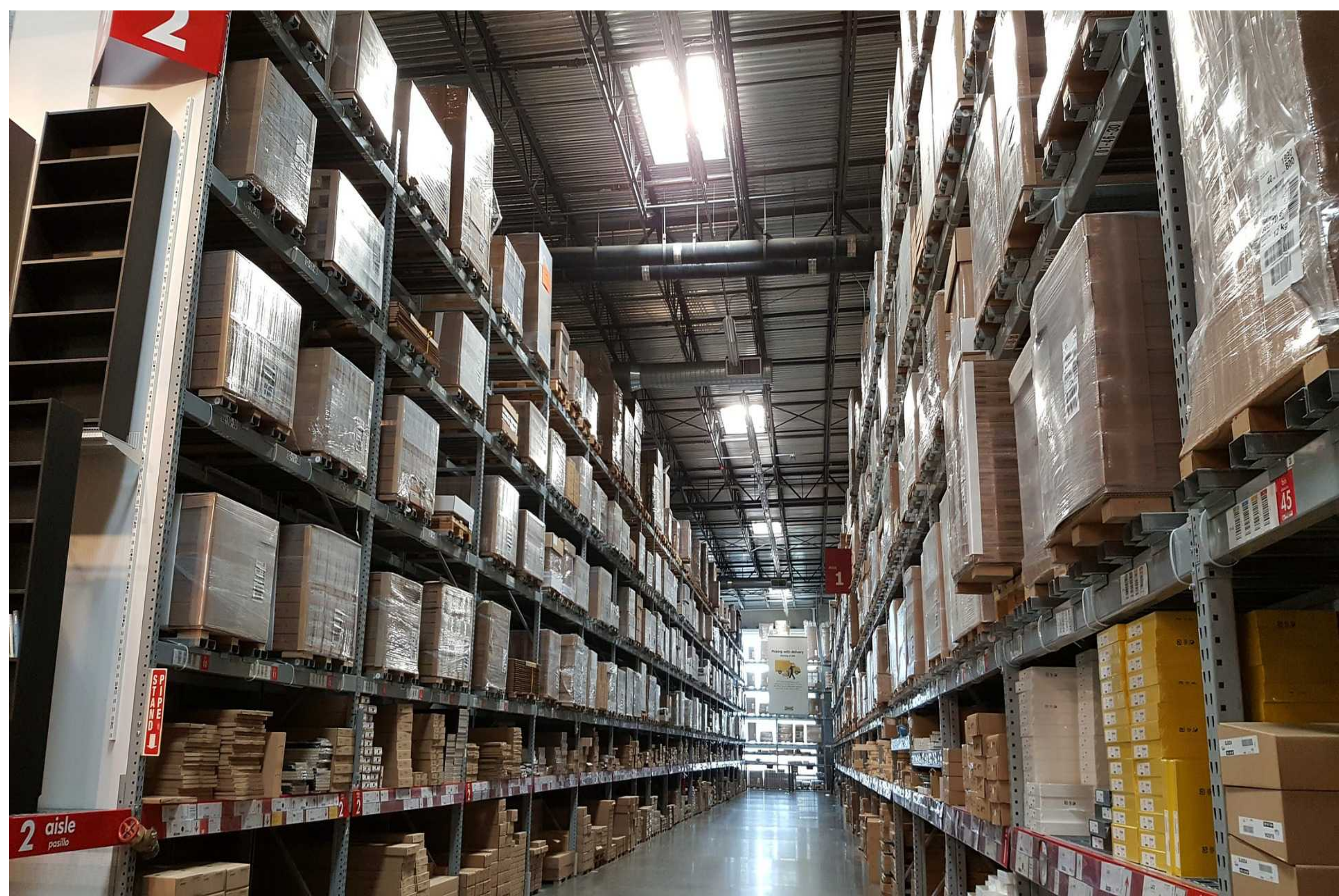
- T400 High-Speed Ring Type Stretch Wrapper

HORIZONTAL STRETCH WRAPPERS

- S600 Horizontal Stretch Wrapper
- S1800 Horizontal Stretch Wrapper

SIX-SIDE PACKAGING SYSTEM

- S2200 Six Side Winding Machine



T100

Full-Automatic
Stretch Wrapper

Joompac®



Main Features:

- Full-automatic stretch wrapping machine with automated stretch wrapping and cutting film function after wrapping finished
- Fully closed electrical cabinet to avoid dust entering, enabling longer life of the wrapping machine and providing more safety
- Closed film carriage; can be supplied with AC motor and inverter in film carriage, enabling film stretching up to 400% film length with wrapped film being bright and smooth; or without ac motor in film carriage for film stretching up to 250%
- Easy to operate via touchscreen, where all individual settings can be set
- Closed film carriage and arc mast realizes better human safety standard
- Beautiful design, easy assembling, easy installation before first usage
- Can be delivered with Top Platen and/or weight scale

Delivered with film material:

- LLDPE stretch film
- Thickness 8µm - 35µm
- Length 2800m – 1300m (approx)
- Breadth 500mm or 750mm
- I.D. 76.2mm O.D. 240mm

Other film material also possible upon request

See this machine in action (VIDEO): youtu.be/TiVSJr2CSBI

T101

Semi-Automatic Stretch Wrapper

Joompac®



Main Features:

- Semi-automatic stretch wrapping machine with automated stretch wrapping function
- Fully closed electrical cabinet to avoid dust entering, enabling longer life of the wrapping machine and providing more safety
- Closed film carriage; can be supplied with AC motor and inverter in film carriage, enabling film stretching up to 300% film length with wrapped film being bright and smooth; or without ac motor in film carriage for film stretching up to 150%
- Easy to operate via touchscreen, where all individual settings can be set
- Closed film carriage and arc mast realizes better human safety standard
- Beautiful design, easy assembling, easy installation before first usage
- Can be delivered with Top Platen and/or weight scale

Delivered with film material:

- LLDPE stretch film
- Thickness 8µm - 35µm
- Length 2800m – 1300m (approx)
- Breadth 500mm or 750mm
- I.D. 76.2mm O.D. 240mm

Other film material also possible upon request

See this machine in action (VIDEO): youtu.be/3IkVCNA1hbs

T102

Stretch Wrapper
With Top Platen



Joompac®

Main Features:

- Can be fully-automated (with automated stretch wrapping and cutting film function after wrapping finished) or semi-automated (with automated stretch wrapping function)
- Electrical Top platen to press and secure lighter cargo that need to be wrapped
- Closed film carriage; can be supplied with AC motor and inverter in film carriage, enabling film stretching up to 300% film length with wrapped film being bright and smooth; or without ac motor in film carriage for film stretching up to 150%
- Easy to operate via touchscreen, where all individual settings can be set
- Closed film carriage and arc mast realizes better human safety standard
- Beautiful design, easy assembling, easy installation before first usage
- Can be delivered with weight scale/or Forklift turntable

Delivered with film material:

- LLDPE stretch film
- Thickness 8µm - 35µm
- Length 2800m – 1300m (approx)
- Breadth 500mm or 750mm
- I.D. 76.2mm O.D. 240mm

Other film material also possible upon request

See this machine in action (VIDEO): youtu.be/Qx763PX9dIM

T103

Stretch Wrapper With Weight Scale



Joompac®

Main Features:

- Can be fully-automated (with automated stretch wrapping and cutting film function after wrapping finished) or semi-automated (with automated stretch wrapping and weight function)
- Can detect the weight of the goods before and after packaging
- Can communicate with computer for data reading, analysis, statistics and online printing
- Easy to operate via touchscreen, where all individual settings can be set
- Closed film carriage and arc mast realizes better human safety standard
- Beautiful design, easy assembling, easy installation before first usage
- Can be delivered with weight scale/or Forklift turntable

Delivered with film material:

- LLDPE stretch film
- Thickness 8µm - 35µm
- Length 2800m – 1300m (approx)
- Breadth 500mm or 750mm
- I.D. 76.2mm O.D. 240mm

Other film material also possible upon request

See this machine in action (VIDEO): youtu.be/7Nj9xwnSu6s

T104

Stretch Wrapper
With Forklift

Joompac®



Main Features:

- Can be fully-automated or semi-automated
- Closed film carriage; can be supplied with AC motor and inverter in film carriage, enabling film stretching up to 300% film length with wrapped film being bright and smooth; or without ac motor in film carriage for film stretching up to 150%
- Double chain structure is more stable and safe, and the lifting speed can be adjusted
- Easy to operate via touchscreen, where all individual settings can be set
- Closed film carriage and arc mast realizes better human safety standard
- M type turntable, suitable for manual or electric forklift loading and unloading
- Can be delivered with top platen and/or weight scale

Delivered with film material:

- LLDPE stretch film
- Thickness 8 μ m - 35 μ m
- Length 2800m – 1300m (approx)
- Breadth 500mm or 750mm
- I.D. 76.2mm O.D. 240mm

Other film material also possible upon request

See this machine in action (VIDEO): youtu.be/Um8QtCV2Kmo

T105FM

Automatic Stretch Wrapper With Top Sheet

Joompac®



Main Features:

- This automatic stretch wrapping machine with top sheet is a combination of a pallet stretch wrapping machine and a laminating machine
- Closed film carriage; can be supplied with AC motor and inverter in film carriage, enabling film stretching up to 300% film length with wrapped film being bright and smooth; or without ac motor in film carriage for film stretching up to 150%
- Double chain structure is more stable and safe, and the lifting speed can be adjusted
- Precise positioning, complete efficient automated packaging process
- Compact structure, less space occupation
- Every function can be used individually
- Can be delivered with top platen and/or weight scale

Delivered with film material:

- LLDPE stretch film
- Thickness 8 μ m - 35 μ m
- Length 2800m – 1300m (approx)
- Breadth 500mm or 750mm
- I.D. 76.2mm O.D. 240mm

Other film material also possible upon request

See this machine in action (VIDEO):

N600

Non-Pallet Winding Stretching Packaging Machine



Main Features:

- Ideal for small sized goods or carton wrapping
- Top platen device ensures smooth and safe wrapping process
- Machine can be customized according to customer needs

See this machine in action (VIDEO)
: youtu.be/rlxnovnTU0M

Technical Parameter:

TYPE	N600	N1000
WRAPPING SIZE	600*600*350-600 (mm)	1000*1000*600-1000 (mm)
MACHINE SIZE	1400*520*2535 (mm) LWH	1550*520*2810 (mm) LWH
POWER	1.2KW/220V/50Hz	1.2KW/220V/50Hz
LOAD WEIGHT	100KG	100KG
MACHINE WEIGHT	180KG	250KG
EFFICIENCY	20-40 PALLETS/HOUR	20-40 PALLETS/HOUR
STRETCH RATIO	PRE-STRETCH 300%	PRE-STRETCH 300%
CONTROL SYSTEM	PLC , ADJUSTABLE	PLC , ADJUSTABLE
TOP PLATEN	PNEUMATIC/ELECTRIC	PNEUMATIC/ELECTRIC

Joompac®

Technical Parameter:

MODEL	Y500
WRAPPING SIZE	200-800*200-500 (mm)
MACHINE SIZE	1460*840*1492 (mm) LWH
POWER	0.8KW/220V/50Hz
MACHINE WEIGHT	150KG
EFFICIENCY	20-40 PALLETS/HOUR
TURNTABLE SPEED	0-18 RPM ADJUSTABLE
STRETCH RATIO	PRE-STRETCH 300%
CONTROL SYSTEM	PLC , ADJUSTABLE
LOAD WEIGHT	100KG

Main Features:

- Ideal for wrapping cylindrical products, especially for small cylindrical goods like non-woven fabrics, coils, rubber products, etc.
- Dust proof, moisture proof, etc.
- Easy to move, easy operation, high efficient wrapping.



Y500
MINI Reel
Stretch Wrapper



T200

Online Stretch Wrapper



Joompac®

Main Features:

- Saves labor costs and time
- Machine color can be customized according to requirements
- Easy installation, easy operation, high efficiency, convenient maintenance, space saving
- Widely used in the chemical industry, electronics, food and beverage, paper making and others
- Can be integrated in whole production lines and meet modern company requirements for a total automated production line inclusive wrapping

Delivered with film material:

- LLDPE stretch film
- Thickness 8 μ m - 35 μ m
- Length 2800m – 1300m (approx)
- Breadth: 500mm or 750mm
- I.D.:76.2mm; O.D.:240mm

Other film material also possible upon request

See this machine in action (VIDEO):youtu.be/iUwiKHW3MYy

Technical Parameter:

MODEL	T200
WRAPPING SIZE	(800-1400)MM x (800-1300)MM (CAN BE CUSTOMIZED)
MACHINE SIZE	2820MM x 2000MM x (2600-3200)MM
LOAD WEIGHT	2000KG
MACHINE WEIGHT	900KG
STRETCH RATIO	350% ADJUSTABLE
TURNTABLE SPEED	0~15 RPM ADJUSTABLE
TURNTABLE SIZE	Φ2000MM 450~600 ROLLER CONVEYOR ADJUSTABLE
EFFICIENCY	20~50 PALLET/HOUR
CONTROL SYSTEM	PLC CONTROL
POWER	2.5KW 380V/50Hz
PNEUMATIC	0.6-0.8MPA 250NL/MIN
TOP PLATEN	OPTIONAL
FENCE NETTING	OPTIONAL

T200FM

Online Stretch Wrapper With Top Sheet

Joompac®



Main Features:

- Can be integrated in whole production lines and meets modern company requirements for a total automated production line inclusive wrapping
- Combines automatic top sheet function and online wrapping function
- Easy installation, easy operation, high efficiency, convenient maintenance, space saving

Delivered with film material:

- LLDPE stretch film
- Thickness 8 μ m - 35 μ m
- Length 2800m – 1300m (approx)
- Breadth: 500mm or 750mm
- I.D.:76.2mm; O.D.:240mm

Other film material also possible upon request

See this machine in action (VIDEO):

Technical Parameter:

MODEL	T200FM
WRAPPING SIZE	(800-1400)MM x (800-1300)MM (CAN BE CUSTOMIZED)
MACHINE SIZE	3800MM x 3200MM x 3300MM
LOAD WEIGHT	2000KG
MACHINE WEIGHT	1000KG
STRETCH RATIO	350% ADJUSTABLE
TURNTABLE SPEED	0~12 RPM ADJUSTABLE
TURNTABLE SIZE	Φ2000MM 450~600 ROLLER CONVEYOR ADJUSTABLE
EFFICIENCY	30 PALLET/HOUR
CONTROL SYSTEM	PLC CONTROL
POWER	3.5KW 380V/50Hz
PNEUMATIC	0.6-0.8MPA 250NL/MIN
TOP SHEET FEED	ELECTRIC
SHEET FILM CUT	MACHANIC
SHEET FILM LIFTER	ELECTRIC RAIL DOUBLE CHAIN DRIVEN
FILM LENGTH	SHEET FILM 0~2000MM ADJUSTABLE
TOP PLATEN	OPTIONAL
FENCE NETTING	OPTIONAL

MD01

Truss Manipulator Stacker

Joompac[®]

Main Features:

- Can be integrated in whole production lines and meets modern company requirements for a total automated production line inclusive wrapping
- With X, Y and Z axis to adjust the position and realize trajectory movement of the wrapped goods
- Fully automated machine, controlled by industrial controllers (such as PLC, motion control, single chip microcomputer, etc.)
- A complete set of automatic operation process; signals of various input devices (various sensors, buttons, etc.) through the controller after making a certain logical judgment, the output components (relays, motor drivers, indicator lights, etc.) are given an execution command to execute a joint movement between the X, Y and Z axis

Consisting Of Different Parts:

1. The structural frame;
2. The X-axis, Y-axis and Z-axis, which are the core parts of the truss manipulator,
3. The fixture can adjust to different forms according to the shape, size and material of the wrapped goods, such as: vacuum suction, chuck clamping, holding or pin type fixture inserting.
4. Control cabinet, which has the "brain" function of the truss manipulator, collects sensor signals and other information and sends instructions to the execution elements to execute according to the given actions.

Related Features:

1. High efficiency: its axes run in a straight line at a very high speed and can respond quickly with a servo motor;
2. Stability - minimal error tolerance range, up to 0.05mm; High precision - positioning accuracy; Big load weight
3. Simple operation: Based on rectangular coordinate system, its motion parameters are relatively simple





T300

Full-Automatic
Swing Arm Type

Joompac®



Main Features:

- Can be integrated in whole production lines and meets modern company requirements for a total automated production line inclusive wrapping; can also independently be used for wrapping
- Highly suitable for production environment with large production volume, can handle different kind of wrapped goods
- Can automatically complete the whole process of goods sensing, centering, conveying, packaging, etc
- Currently widely used in food and beverage industry, chemical industry, paper making, building materials and other industries
- Cantilever system: cantilever automatic reset, high sensitivity emergency braking system; membrane frame system: pre-stretching membrane frame, film stretching up to 400%, automatic film delivery, film delivery speed adjustable; automatic film breaking device: automatic clamping, cutting stretching film, realizing unmanned operation
- Lifting column: double chain structure, adjustable lifting speed frequency conversion; control system, PLC control; number of wrapping times can be adjusted, and the height of goods can be automatically sensed
- Safety protection: eye-catching flash safety warning and protection net (optional), photoelectric protection for goods in and out (conveyor line); equipment composition:
- Cantilever winding packaging machine + four corner gantry support + 4m power transmission line + automatic film breaking

See this machine in action (VIDEO): youtu.be/6dT1pg7zHkQ

T300Y

Rotary Stretch Wrapper



Joompac®

Main Features:

- High speed rotary arm wrapper; less space occupation
- High safety factor, guaranteed high safe grade during production

Delivered with film material:

- LLDPE stretch film
- Thickness 8μm - 35μm
- Length 2800m – 1300m (approx)
- Breadth: 500mm or 750mm
- I.D.:76.2mm; O.D.:240mm

Other film material also possible upon request

See this machine in action (VIDEO):

Technical Parameter:

WRAPPING SIZE	(500-1200) x (500-1200) x 2200MM (LxWxH)
ARM SPEED	0~30RPM ADJUSTABLE
POWER	2.5KW 380V/50Hz
EFFICIENCY	>40 PALLET/HOUR
PNEUMATIC	0.4-0.6Mpa,350NL/MIN
MACHINE SIZE	4500 x 2200x3500MM (LxWxH)
COMPONENT	COLUMN+ARM+TOP PLATEN+BREAKER+CONVEYOR
MOTOR	2.5KW CARRIAGE+LIFTER+ARM+TOP PLATEN+TOP SHEET
CARRIAGE	250% ADJUSTABLE
BREAKER	FULL-AUTOMATIC
TOP PLATEN	ELECTRIC DRIVEN
LIFTER	ELECTRIC RAIL DOUBLE CHAIN DRIVEN
CONTROL SYSTEM	PLC CONTROL
CONVEYOR	OPTIONAL
FENCE NETTING	OPTIONAL
REMARK	ACCEPT CUSTOMIZED

T300FM

Rotary Arm Stretch Wrapper With Top Sheet

Joompac®



Main Features:

- 5 Sides wrapping, dust-proof, moisture-proof, rain-proof
- High safety factor, guaranteed high safe grade during production
- All in one stretch wrapping machine with a combination of stretch wrapping machine and laminating machine

Delivered with film material:

- LLDPE stretch film
- Thickness 8 μ m - 35 μ m
- Length 2800m – 1300m (approx)
- Breadth: 500mm or 750mm
- I.D.:76.2mm; O.D.:240mm

Other film material also possible upon request

See this machine in action (VIDEO):

Technical Parameter:

WRAPPING SIZE	(500-1200) x (500-1200) x 2200MM (LxWxH)
ARM SPEED	0~20RPM ADJUSTABLE
POWER	4.0KW 380V/50Hz
EFFICIENCY	>25 PALLET/HOUR
PNEUMATIC	0.4-0.6Mpa,350NL/MIN
MACHINE SIZE	4500 x 2200x3500MM (LxWxH)
COMPONENT	COLUMN+ARM+TOP PLATEN+BREAKER+CONVEYOR
MOTOR	4.0KW CARRIAGE+LIFTER+ARM+TOP PLATEN+TOP SHEET
CARRIAGE	300% ADJUSTABLE
BREAKER	FULL-AUTOMATIC
TOP SHEET FILM	WIDTH 1800MM DIA 100~300MM THICKNESS 30~100MM
LIFTER	ELECTRIC RAIL DOUBLE CHAIN DRIVEN
CONTROL SYSTEM	PLC CONTROL
CONVEYOR	OPTIONAL
FENCE NETTING	OPTIONAL
TOP PLATEN	OPTIONAL

T300E

Rotary Arm Stretch Wrapper

Joompac®



Main Features:

- Triangle type wrapper can do stretch wrapping with goods on the ground
- Not dependent on factors as conveying lines, maximum turntable load and other factors
- Fast rotation, can wrap heavy goods as well as light goods
- Fast rotation, high efficiency

Delivered with film material:

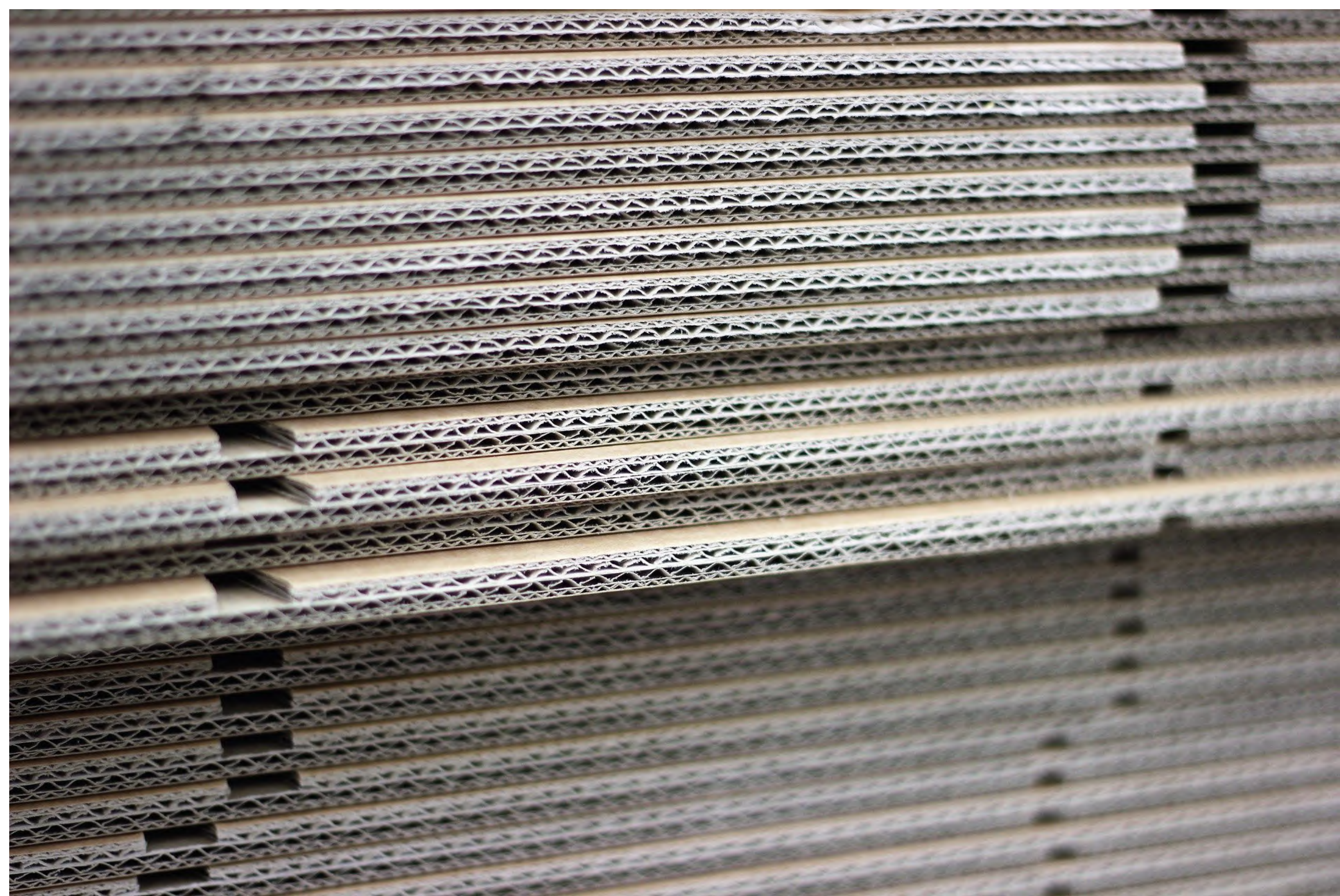
- LLDPE stretch film
- Thickness 8µm - 35µm
- Length 2800m – 1300m (approx)
- Breadth: 500mm or 750mm
- I.D.:76.2mm; O.D.:240mm

Other film material also possible upon request

See this machine in action (VIDEO):

Technical Parameter:

WRAPPING SIZE	(500-1300) x (500-1200) x 1800MM (LxWxH)
EFFICIENCY	20~40 PALLET/HOUR
ARM SPEED	0~15 RPM ADJUSTABLE
CARRIAGE	250% ADJUSTABLE
LIFTER	ELECTRIC RAIL DOUBLE CHAIN DRIVEN
ROTARY ARM	AUTOMATIC RESET, HIGHLY SENSITIVE STOP SYSTEM
MACHINE SIZE	4300 x 2000x3500MM (LxWxH)
PNEUMATIC	0.6-0.8Mpa,700NL/MIN
CONTROL SYSTEM	PLC CONTROL
POWER	1.5KW 380V/50Hz
SAFETY DEVICE	SAFETY ALERT + SAFETY WARNING LIGHT
FILM BREAKER	OPTIONAL
FENCE NETTING	OPTIONAL



F1800B

Frame Type

Top Sheet Machine



Main Features:

- Can be integrated in production lines
- Applied for pallet goods which need film covering on the top
- Automatic top film covering function, can work together with stretch wrapping machine
- Saving labor cost, reducing labor intensity
- High efficient, wrapping appearance unified

Joompac®

Main Features:

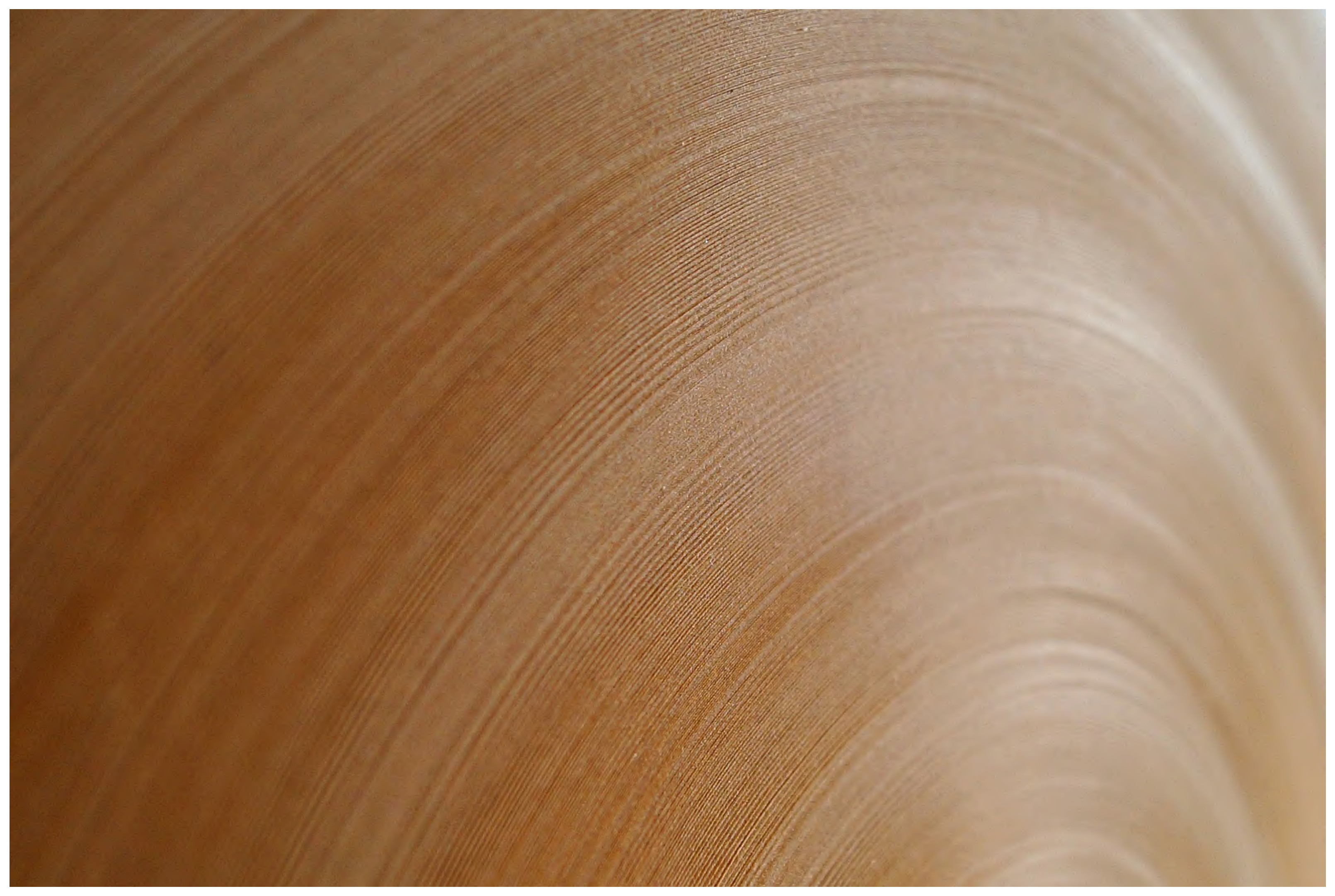
- laminating machine, can be integrated in production lines and apply lamination on a variety of goods
- Automatic top film covering brings a good wrapping effect
- High efficient when working with production line, equipped with automatic control system and coordinates conveyors speed
- Finish film covering during conveyor process



F1800A

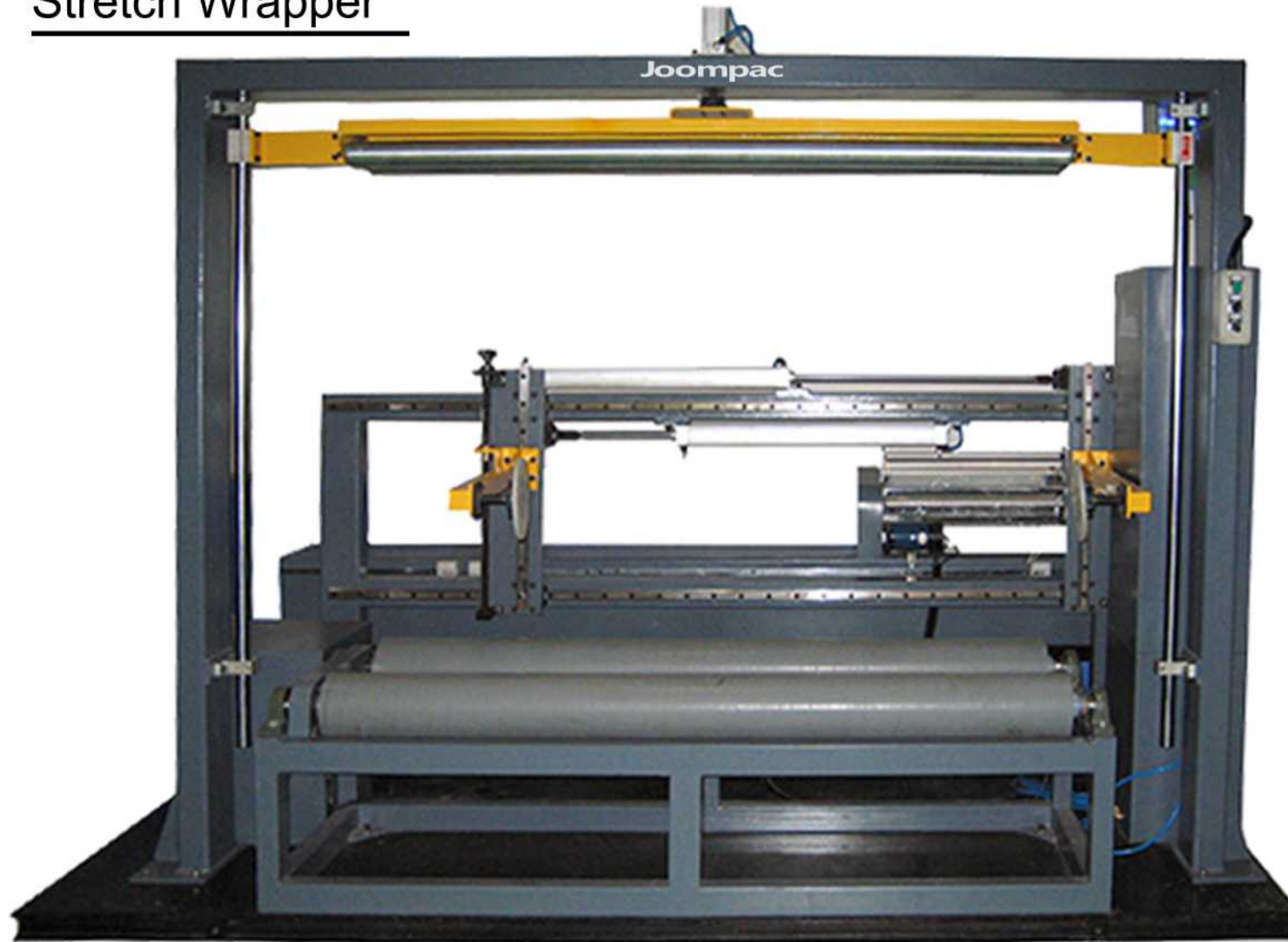
Through Type

Top Sheet Machine



W1600F

Radial Stretch Wrapper



Main Features:

- Dust-proof, moisture- proof
- Designed for wrapping long cylindrical products
- Mainly used for: Non-woven fabric, paper, carpet, etc
- Suitable for wrapping single or multiple cylindrical products at their circumference; suitable for light and heavy products
- According to customers' requirements, different models can be chosen, as online/offline model (to integrate in production line and not) and others.

Joompac®

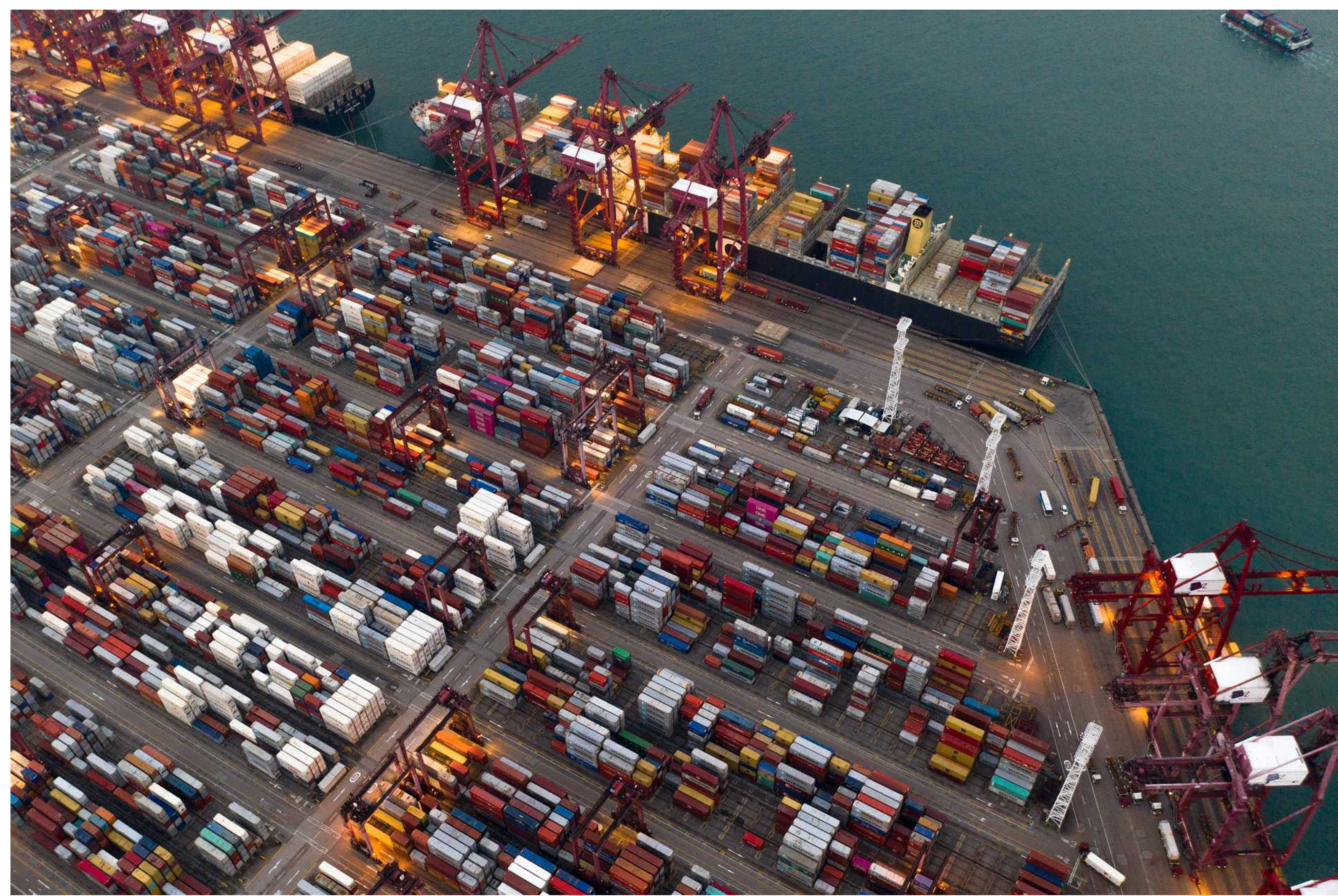
Main Features:

- Big reel stretch wrapper is mainly used for cylindrical goods
- Good for storage and transportation of goods
- Wrapping realized in axial direction
- Dust proof, moisture proof etc.



Y2000

Reel
Stretch Wrapper



T400

High Speed

Ring Type Stretch Wrapper

Joompac[®]



Main Features:

- Automatic high-speed ring type wrapping machine is suitable for packaging of goods to be transported in a container, bulk or pallets
- Packaging efficiency can reach 60 to 120 pallets per hour
- Fast wrapping speed, good performance, material saving
- Also suitable for the logistics industry and application of packing in stereoscopic warehouses
- Widely used in the food and beverage industry, electronics, mechatronic machinery, papermaking, printing, metallurgy and building materials industries
- Machine can start wrapping at any position, satisfies diversified packing methods
- This high-speed ring packaging machine is a new generation wrapping machine, upgrading the traditional packaging way; driven by a horizontal rotating ring, with a smooth rotation and low noise
- Saves material, customers can choose a variety of flexible packaging methods; saving more than 20 meters film per pallet
- It covers the most fundamental needs of all customers, saves money and saves the waste of resources. It truly reflects the revolutionary significance of industry 4.0!

Delivered with film material:

- LLDPE stretch film
- Thickness 8 μ m - 35 μ m
- Length 2800m – 1300m (approx)
- Breadth 500mm or 750mm
- I.D. 76.2mm O.D. 240mm

Other film material also possible upon request

See this machine in action (VIDEO): youtu.be/e-8PNlx_jNU



S600

Horizontal Stretch Wrapper



Main Features:

- Can be used for rectangular and square products with an inner diameter of max. 600mm
- Widely used for wrapping plastic profiles, aluminum profiles, boards, pipes, textiles, construction boards and in the steel industry
- Machine works with much kind of wrapping materials, like stretch films, composite paper, woven bags, EPEE etc
- Elegant wrapping; dust and moisture proof, stable and safe, easy operation

See this machine in action (VIDEO): youtu.be/qF3cL1-WdAQ

Joompac®

Main Features:

- Suitable for long, square product's wrapping
- Widely used for profiles, aluminum, board, pipes, textiles, construction materials, steel industry etc
- Relevant wrapping, dust and moisture proof, stable and safe performance, easy operation



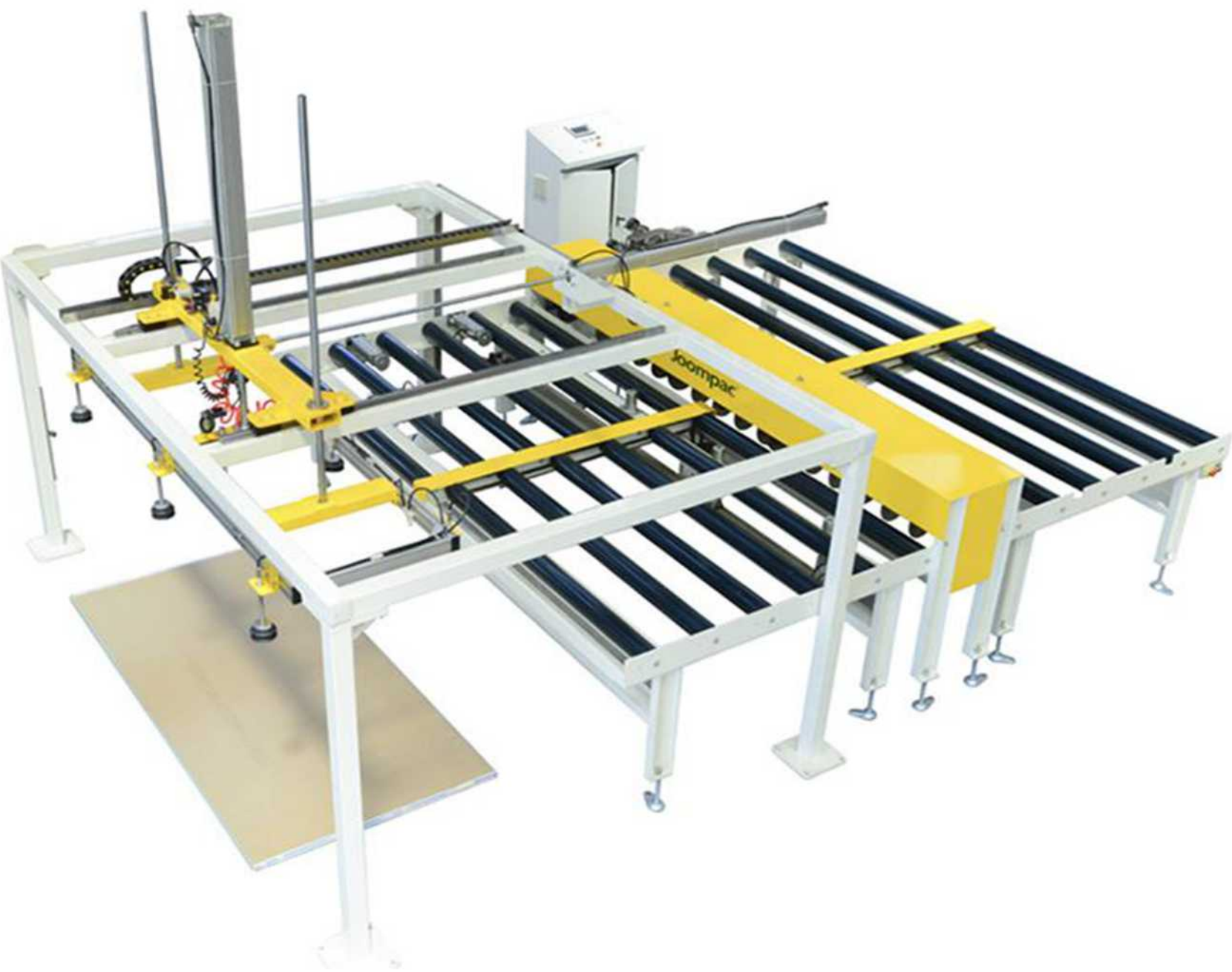
S1800

Horizontal Stretch Wrapper

DQ01

Automatic Gypsum Bar Cutter

Joompac®



Main Features:

- Automatic feeding, saving time and labor, automatic grab plate, convenient and fast, unmanned operation, easy access, simple, pick-up is stable and secure, Automatic adjustment, unmanned operation
- Automatic plate alignment, NEAT and economical whole cut, one time, the sheet is divided into several equal strips at one time, It's easy to understand
- The cutter is durable, adjustable spacing, high quality cutter
- Folding is easy, easy to do, the sinew after slitting is connected like an organ, easy to fold and carry quickly, uniform division, easy disassembly
- After the division assumes the organ shape, is easy to fold the transportation
- Siemens control system, intelligent and reliable, easy to learn, convenient and reliable.

Technical Parameter:

CUTTING MATERIAL	PLASTERBOARD
MATERIAL SIZE	2400~3000MM x 1200MM (LxW)
THICKNESS	9~12.5MM
EFFICIENCY	3~5 PIECE/MIN
POWER	3.5KW 380V/50Hz
PNEUMATIC	2000ML/50Hz
LATH WIDTH	83MM, 90MM, 100MM ADJUSTABLE
REMARK	ACCEPT CUSTOMIZED

See this machine in action (VIDEO):youtu.be/DpcAtwuNJWI



S2200

Six Side
Winding Machine

Joompac®



Main Features:

- Adopts module design, with pallet leg adder machine, can add pallet legs for goods, material saving; high efficient
- Pallet leg storage machine, that can push pallet legs automatically, put right quantities of pallet legs as per goods size in advanced
- Unique wrapping design to do four sides wrapping; could wrap six sides with extra rotary wrapper; maximizing dust and moisture proof
- Applied for different board's production lines, worker could use forklift to unload wrapping products from unloading station, which could design like lifting platform
- Fully automatic wrapping, saving manufacturing costs for clients

Delivered with film material:

- LLDPE stretch film/Nanoscale stretch film/Degradable stretch film
- Thickness 8µm - 35µm
- Breadth: 500mm or 750mm
- I.D.:76.2mm; O.D.:240mm

See this machine in action (VIDEO):youtu.be/rUWubtDXZzU

Technical Parameter:

MODEL	SIX SIDE WRAPPING WINDING SYSTEM
MACHINE SIZE	6500MM x 4200MM x 2900MM (IL x W x H)
RING SIZE	Φ2000MM
EFFICIENCY	25 PALLETS/HOUR
WRAPPING SIZE	1300MM x 1500MM x 3000MM (W x H x L)
CONVEYOR SPEED	10~15M/MIN
VOLTAGE	380V/3P (+15% , -10%) 50Hz
FENCE NETTING	OPTIONAL

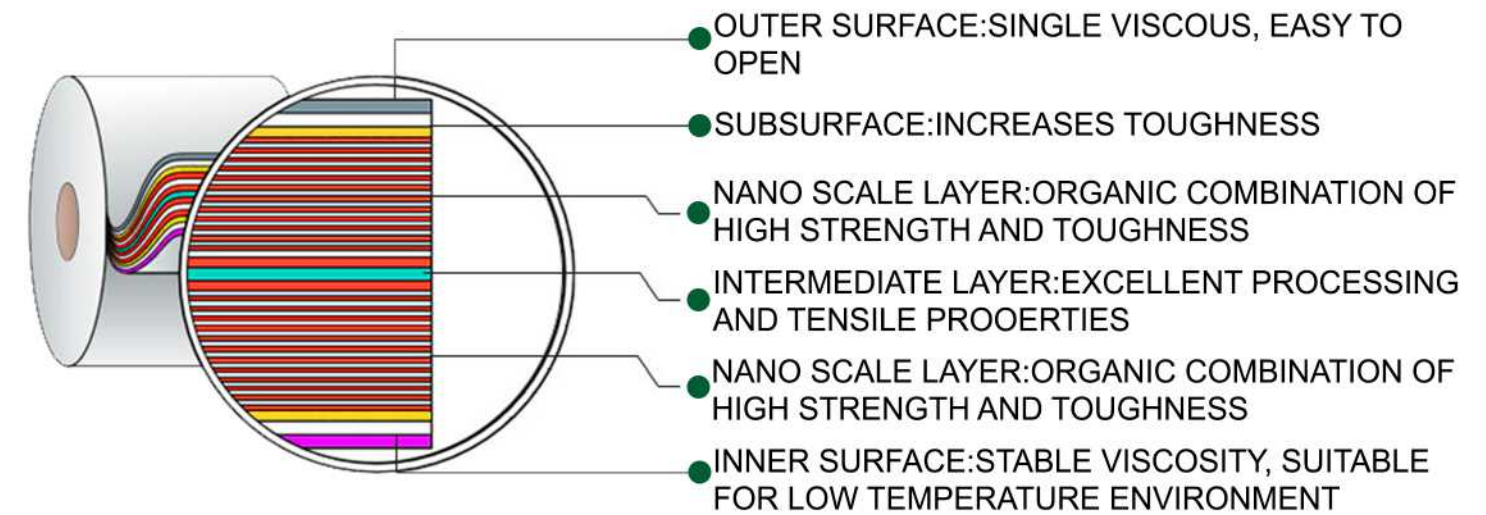
Film Material



“What is nanometer wrapping film?”

Nanometer wrapping film - the full name is nanometer layer extrusion wrapping film, 55 nanometer wrapping film is through the nanometer layer 55 film co-extrusion technology, a variety of materials (PP, PET, etc.) compound layered extrusion molding, forming a monolayer thickness in the nanometer level, the number of 55 layers of high strength, high toughness wrapping film.

55 Layer Film



Compared with the ordinary co-extrusion film technology to produce a higher number of layers, generally in 2-17 layers

The higher number of layers, the better the physical and mechanical properties of the thin film, mainly reflected in the increase of the elongation into geometric multiples, and can withstand higher load and puncture strength

Because of the production process, it is difficult to achieve complete thickness uniformity, or even in the extrusion process discontinuous situation. And manufacturing costs are high

The higher number of layers, the better the physical and mechanical properties of the thin film, mainly reflected in the increase of the elongation into geometric multiples, and can withstand higher load and puncture strength.

